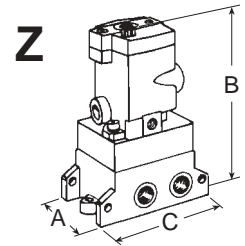
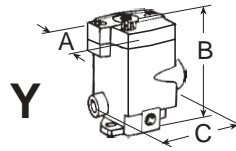
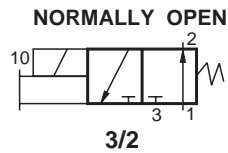
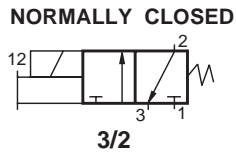


Series 16 Compact Valves

3/2 Valves – Single Direct Solenoid



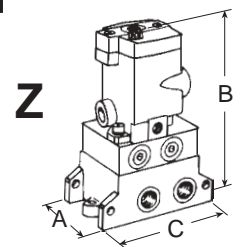
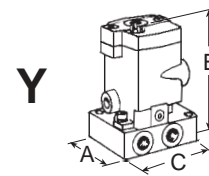
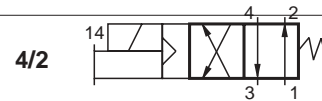
Port Size	Valve Type	Avg. Cv	Valve Model Numbers		Dimensions inches (mm)			Weight lb. (kg)
			Normally Closed	Normally Open	A	B	C	
1/8	Y	0.3	1613B1020	1614B1020	2.7 (69)	3.8 (95)	3.0 (77)	1.4 (0.6)
1/4	Y	0.3	1613B2020	1614B2020	2.7 (69)	3.8 (95)	3.0 (77)	1.4 (0.6)
1/4	Z	0.3	1613C2322*	1614B2322*	2.7 (69)	6.6 (168)	4.2 (107)	1.4 (0.6)

*Also order manifold 256B91 (not included with this valve).

4/2 Valves – Single Solenoid Pilot

Port Size	Valve Type	Valve Model Numbers	Average Cv	Weight lb. (kg.)
1/4	Y	1616C2020	0.4	2.4 (1.1)
1/4	Z	1616C2322*	0.4	2.4 (1.1)

*Also order manifold manifold 257B91 (not included with valve).



IMPORTANT NOTE

Please read carefully and thoroughly all of the **CAUTIONS** on page 89.

Series 16 OVERALL DIMENSIONS inches (mm)

Valve Type	A	B	C
Y (3/2)	2.7 (69)	3.8 (95)	3.0 (77)
Y (4/2)	2.7 (69)	4.8 (121)	3.1 (78)
Z	2.63 (66.6)	6.6 (168)	4.2 (107)

STANDARD SPECIFICATIONS: For Series 16 valves.

Solenoids: AC or DC power. See page 3 for voltages.

Power Consumption: 87 VA inrush, 30 VA holding on 50 or 60 Hz; 14 watts on DC.

Ambient Temperature: 40° to 120°F (4° to 50°C).

Media Temperature: 40° to 175°F (4° to 80°C).

Flow Media: Filtered air. 5 micron recommended.

Inlet Pressure: 3/2 Valves: 5 to 150 psig (0.3 to 10 bar).

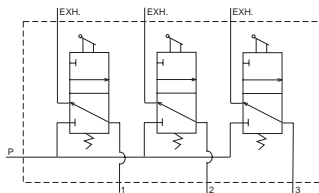
4/2 Valves: 30 to 150 psig (2 to 10 bar).

For Pendant Controls:

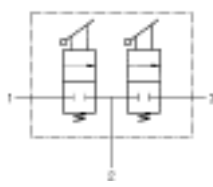
Ambient & Media Temperature, Flow Media: Same as above.

Inlet Pressure: 0 to 150 psig (0 to 10 bar).

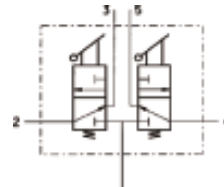
Pendant Control Valves



Triple 3-way



Dual 2-way



Dual 3-way



ROSS Pendant Control valves are a durable pneumatic solution that can be used anywhere you need manual control of devices such as an air hoist, air motor, or counterbalance cylinder. Ideal for use on or with material handling devices such as overhead cranes or air hoists, ROSS Pendant Control valves can withstand even the toughest environments.

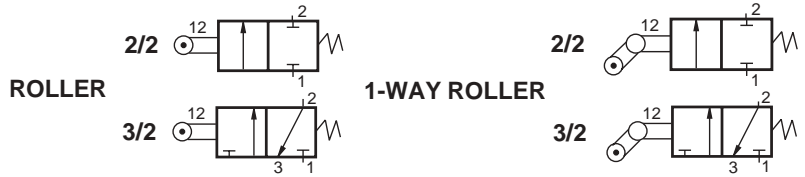
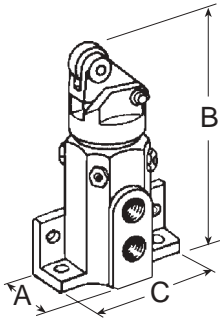
Model Description

Model Description	Pipe Sizes	Numbers	1-2 Cv	2-3 Cv	Weight lb. (kg)
Dual 3-way, no levers/handle	1/8"	1442H75	0.24	0.42	0.7 (0.3)
Dual 2-way high flow, no levers/handle	1/4"	1443H75	0.73	0.55	0.8 (0.4)
Triple 3-way, no levers/handle	1/4"	1466H75	0.24	0.42	1.2 (0.5)
Dual 3-way; two levers only	1/8"	2025A1900	0.24	0.42	0.9 (0.4)
Dual 3-way; two levers/handle	1/8"	3900A0379	0.24	0.42	1.6 (0.7)
Dual 2-way high flow; two levers only	1/4"	2025A2901	0.73	0.55	1.0 (0.5)
Dual 2-way high flow; two levers/handle	1/4"	3900A0378	0.73	0.55	1.7 (0.8)
Triple 3-way; three levers only	1/4"	2025A2902	0.24	0.42	1.6 (0.7)
Triple 3-way; three levers/handle	1/4"	3900A0407	0.24	0.42	2.3 (1.0)



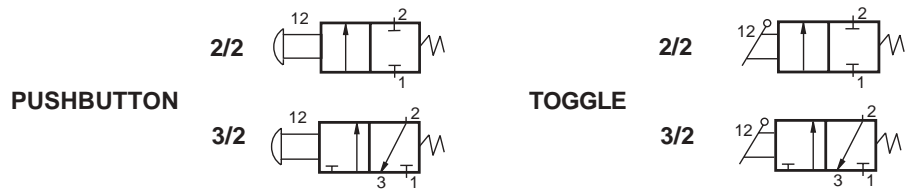
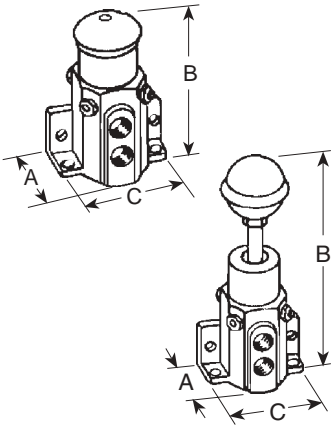
Series 11 & 12 Cam and Manual Valves

2/2 and 3/2 Cam Valves



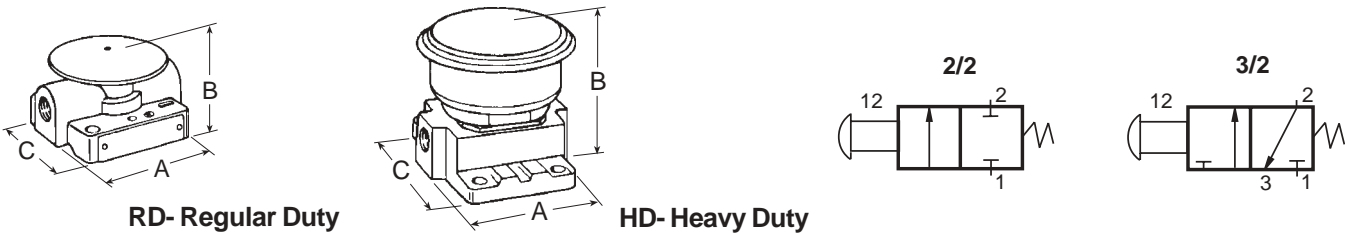
Port Size	Valve Type	Valve Model Numbers	Average C_v	Dimensions inches (mm)			Weight lb. (kg)
				A	B	C	
1/4	2/2 - Roller	1131A2001	0.5	1.82 (46)	4.37 (111)	2.76 (70)	1.0 (0.5)
1/4	3/2 - Roller	1133A2001	0.5	1.82 (46)	4.37 (111)	2.76 (70)	1.0 (0.5)
1/4	2/2 - 1-Way Roller	1131A2002	0.5	1.82 (46)	4.50 (114)	2.76 (70)	1.0 (0.5)
1/4	3/2 - 1-Way Roller	1133A2002	0.5	1.82 (46)	4.50 (114)	2.76 (70)	1.0 (0.5)

2/2 and 3/2 Lever and Pushbutton Valves



Port Size	Valve Type	Valve Model Numbers	Average C_v	Dimensions inches (mm)			Weight lb. (kg)
				A	B	C	
1/4	2/2 - Pushbutton	1121A2001	0.5	1.82 (46)	3.27 (83)	2.76 (70)	1.0 (0.5)
1/4	3/2 - Pushbutton	1123A2001	0.5	1.82 (46)	3.27 (83)	2.76 (70)	1.0 (0.5)
1/4	2/2 - Toggle	1121A2002	0.5	1.82 (46)	5.92 (150)	2.76 (70)	1.0 (0.5)
1/4	3/2 - Toggle	1123A2002	0.5	1.82 (46)	5.92 (150)	2.76 (70)	1.0 (0.5)

2/2 and 3/2 Pushbutton Valves



Port Size	Valve Type	Valve Model Numbers		Average C_v	Dimensions inches (mm)			Weight lb. (kg)
		Green Button	Red Button		A	B	C	
1/8	3/2 - RD	1223A1005	1223A1006	0.6	2.8 (70)	1.6 (41)	2.3 (58)	1.0 (0.5)
1/4	3/2 - RD	1223A2005	1223A2006	0.6	2.8 (70)	1.6 (41)	2.3 (58)	1.0 (0.5)
1/4	2/2 - HD	1221B2001	1221B2003	0.8	2.7 (69)	2.3 (58)	3.0 (77)	1.8 (0.8)
1/4	3/2 - HD	1223B2001	1223B2003	0.8	2.7 (69)	2.3 (58)	3.0 (77)	1.8 (0.8)

Ring-type Guard: Helps to protect against accidental valve actuation. Order by following part numbers:

For RD valves: 279B30
For HD valves: 278B30

IMPORTANT NOTE

Please read carefully and thoroughly all of the **CAUTIONS** on page 89.

STANDARD SPECIFICATIONS: For valves on this page.

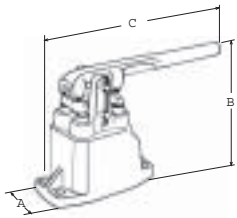
Ambient /Media Temperature: 40° to 175° F (4° to 80° C).

Flow Media: Filtered air. 5 micron recommended.

Inlet Pressure: 5 to 150 psig (0.3 to 10 bar) except Type RD.
5 to 125 psig (0.3 to 8.6 bar) on Type RD.

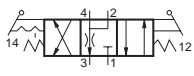
Series 31 & 36 Manual Valves

4/3 Lever Valves

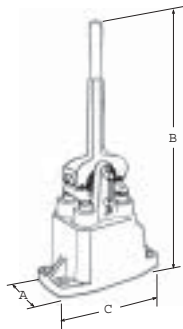
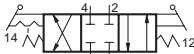


**3 Positions,
All Ports on Bottom Face**

OPEN CENTER



CLOSED CENTER



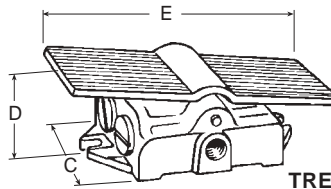
Port Size	Valve Model Numbers	Avg. Closed/Open		Dimensions inches (mm)			Weight lb. (kg)
		C _v	Center	A	B	C	
3/8	3126A3007	1.6	Open	2.12 (54)	4.40 (112)	8.06 (205)	2.0 (.9)
3/8	3126A3010	1.6	Closed	2.12 (54)	4.40 (112)	8.06 (205)	2.0 (.9)
1/2	3126A4007	2.6	Open	2.75 (70)	5.53 (140)	11.16 (284)	3.8 (1.7)
1/2	3126A4010	2.6	Closed	2.75 (70)	5.53 (140)	11.16 (284)	3.8 (1.7)
3/4	3126A5007	4.6	Open	3.25 (83)	6.15 (156)	12.48 (317)	5.0 (2.3)
3/4	3126A5010	4.6	Closed	3.25 (83)	6.15 (156)	12.48 (317)	5.0 (2.3)
1	3126A6007	8.8	Open	4.13 (105)	7.94 (202)	18.63 (473)	10.0 (4.5)
1	3126A6010	8.8	Closed	4.13 (105)	7.94 (202)	18.63 (473)	10.0 (4.5)
1-1/4	3126A7007	12	Open	4.75 (121)	8.16 (207)	18.75 (476)	11.0 (5.0)
1-1/4	3126A7010	12	Closed	4.75 (121)	8.16 (207)	18.75 (476)	11.0 (5.0)
3/8	3126A3009	1.6	Open	2.1 (54)	10.8 (273)	4.3 (109)	2.4 (1.1)
3/8	3126A3012**	1.6	Open	2.1 (54)	10.8 (273)	4.3 (109)	2.4 (1.1)
3/8	3126A3013	1.6	Closed	2.1 (54)	10.8 (273)	4.3 (109)	2.4 (1.1)
3/8	3126A3014**	1.6	Closed	2.1 (54)	10.8 (273)	4.3 (109)	2.4 (1.1)
1/2	3126A4009	2.6	Open	2.8 (70)	13.5 (344)	5.6 (143)	4.8 (2.2)
1/2	3126A4012**	2.6	Open	2.8 (70)	13.5 (344)	5.6 (143)	4.8 (2.2)
1/2	3126A4013	2.6	Closed	2.8 (70)	13.5 (344)	5.6 (143)	4.8 (2.2)
1/2	3126A4014**	2.6	Closed	2.8 (70)	13.5 (344)	5.6 (143)	4.8 (2.2)
3/4	3126A5009	4.6	Open	3.3 (83)	15.2 (385)	6.4 (162)	6.6 (3.0)
3/4	3126A5012**	4.6	Open	3.3 (83)	15.2 (385)	6.4 (162)	6.6 (3.0)
3/4	3126A5013	4.6	Closed	3.3 (83)	15.2 (385)	6.4 (162)	6.6 (3.0)
3/4	3126A5014**	4.6	Closed	3.3 (83)	15.2 (385)	6.4 (162)	6.6 (3.0)

** Non-detented models.

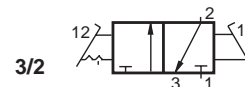
3/2 and 4/2 Pedal and Treadle Valves



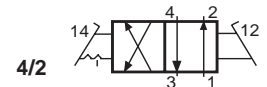
PEDAL



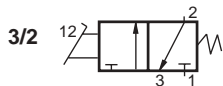
TREADLE



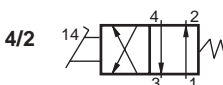
3/2



4/2



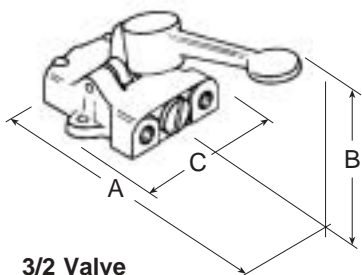
3/2



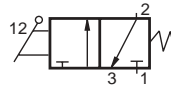
4/2

Port Size	Valve Type	Valve Model Numbers	Avg. C _v	Dimensions inches (mm)					Weight lb. (kg)
				A	B	C	D	E	
1/4	3/2 — Pedal	3643A2002	1.2	6.35 (161)	2.55 (65)	3.44 (87)	1.90 (48)	6.00 (152)	1.3 (.6)
1/4	3/2 — Treadle	3643A2001	1.2	6.35 (161)	2.55 (65)	3.44 (87)	1.90 (48)	6.00 (152)	1.3 (.6)
1/4	4/2 — Pedal	3646A2002	1.2	7.19 (183)	2.87 (73)	3.65 (93)	2.50 (64)	6.50 (165)	2.8 (1.3)
1/4	4/2 — Treadle	3646A2001	1.2	7.19 (183)	2.87 (73)	3.65 (93)	2.50 (64)	6.50 (165)	2.8 (1.3)

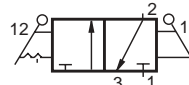
3/2 and 4/2 Lever Valves



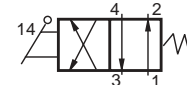
3/2 Valve Illustrated



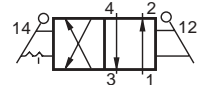
3/2 Spring Return



3/2 Detented



4/2 Spring Return



4/2 Detented

Port Size	Valve Type	Valve Model Numbers*	Avg. C _v	Dimensions inches (mm)			Weight lb. (kg)
				A	B	C	
1/4	3/2 — Detented	3623A2003	1.2	7.16 (182)	3.20 (81)	3.44 (87)	1.3 (0.6)
1/4	3/2 — Spring return	3623A2004	1.2	7.16 (182)	3.20 (81)	3.44 (87)	1.3 (0.6)
1/4	4/2 — Detented	3626A2003	1.2	7.87 (200)	3.81 (97)	3.65 (93)	2.5 (1.1)
1/4	4/2 — Spring return	3626A2004	1.2	7.87 (200)	3.81 (97)	3.65 (93)	2.5 (1.1)

*For models with vertical handle, consult ROSS.

IMPORTANT NOTE

Please read carefully and thoroughly all of the **CAUTIONS** on page 89.

STANDARD SPECIFICATIONS: For valves on this page.
Ambient/Media Temperature: 40° to 175°F (4° to 80°C).
Flow Media: Filtered air. 5 micron recommended.
Inlet Pressure: *Series 31:* 5 to 150 psig (0.3 to 10 bar).
Series 36: 30 to 125 psig (0.3 to 8.5 bar).