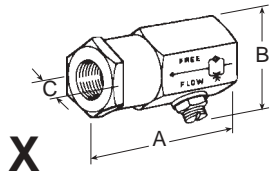
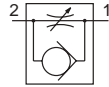


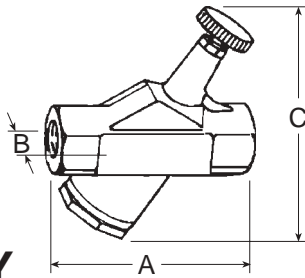
Flow Control Valves

Flow Control Valves

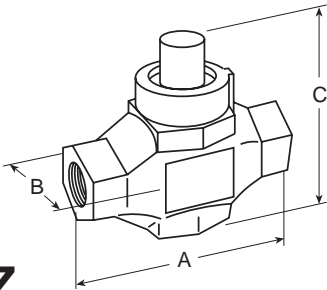
Flow control valves are used to control air flow from air cylinders, thereby controlling the speeds at which the pistons in the cylinders move. They allow free flow in one direction and adjustable, precision controlled flow in the other direction. Adjustment in the X-type models is by means of a screwdriver slot, and in the Y and Z-type models by a knurled knob.



X



Y



Z

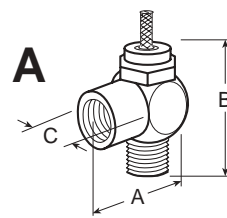
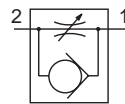
Valve Type	Port Size	Valve Model Number	Avg. Cv (Fully open)	Dimensions inches (mm)			Weight lb. (kg)
				A	B	C	
X	1/8	1968D1004	0.5	2.4 (62)	1.3 (33)	1.0 (25)	0.5 (0.2)
	1/4	1968D2004	0.5	2.4 (62)	1.3 (33)	1.0 (25)	0.5 (0.2)
	3/8	1968D3014	0.5	2.4 (62)	1.3 (33)	1.0 (25)	0.5 (0.2)
Y	1/4	1968B2007	2.3	3.5 (89)	1.3 (33)	4.3 (108)	0.5 (0.2)
	3/8	1968B3007	2.6	3.5 (89)	1.3 (33)	4.3 (108)	0.5 (0.2)
	1/2	1968B4017	2.6	3.5 (89)	1.3 (33)	4.3 (108)	0.5 (0.2)
Y	1/2	1968B4007	7.5	4.8 (121)	1.8 (45)	5.6 (142)	0.8 (0.4)
	3/4	1968B5007	8.3	4.8 (121)	1.8 (45)	5.6 (142)	0.8 (0.4)
	1	1968B6017	8.3	4.8 (121)	1.8 (45)	5.6 (142)	0.8 (0.4)
Y	1	1968B6007	17	5.4 (130)	2.3 (57)	7.1 (181)	2.2 (1.0)
	1-1/4	1968B7007	22	5.4 (130)	2.3 (57)	7.1 (181)	2.2 (1.0)
	1-1/2	1968B8017	22	5.4 (130)	2.3 (57)	7.1 (181)	2.2 (1.0)
Y	1-1/2	1968B8007	50	7.5 (191)	3.5 (90)	9.5 (241)	4.3 (1.9)
	2	1968B9007	50	7.5 (191)	3.5 (90)	9.5 (241)	4.3 (1.9)
	2-1/2	1968B9017	50	7.5 (191)	3.5 (90)	9.5 (241)	4.3 (1.9)
Z	1/4	1968E2007	2.3	2.8 (70)	1.3 (32)	2.4 (60)	0.5 (0.2)
	3/8	1968E3007	2.3	2.8 (70)	1.3 (32)	2.4 (60)	0.5 (0.2)
Z	1/2	1968E4007	7.5	3.8 (96)	1.6 (40)	3.2 (82)	
	3/4	1968E5007	8.3				
Z	1	1968E6007	17	5.0 (127)	2.5 (64)	4.5 (113)	2.1 (1.0)
	1-1/4	1968E7007	22				

Right Angle Flow Control Valves

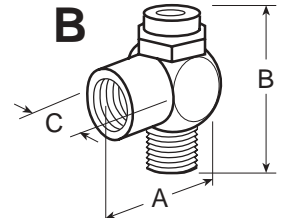
Right angle flow control valves function like those described above. However, their compact right angle design permits use where conventional straight-through flow controls might be undesirable.

Flow adjustment is achieved by means of either a screwdriver slot or a knurled knob.

Models listed in the chart at the right have threaded female inlet ports. Models in the 1/8, 1/4, and 3/8 sizes are also available with push-to-connect tubing fittings.



A



B

Port Size	Type of Adjustment	Valve Model Number	Avg. Cv (Fully open)	Dimensions inches (mm)			Weight lb. (kg)
				A	B	C	
1/8	Slot (B)	1968A1008*	0.3	1.1 (27)	1.3 (32)	0.59 (15)	.06 (.03)
	Knob (A)	1968A1018*	0.3	1.1 (27)	1.9 (48)	0.59 (15)	.08 (.04)
1/4	Slot (B)	1968A2008*	0.6	1.3 (33)	1.6 (41)	0.75 (19)	.12 (.05)
	Knob (A)	1968A2018*	0.6	1.3 (33)	2.3 (59)	0.75 (19)	.14 (.06)
3/8	Slot (B)	1968A3008*	1.9	1.6 (44)	1.9 (47)	0.91 (23)	.20 (.09)
1/2	Slot (B)	1968A4008	2.8	1.8 (46)	2.3 (58)	1.1 (28)	.34 (.15)

*Also available for use with tubing. Consult ROSS for model numbers.

IMPORTANT NOTE

Please read carefully and thoroughly all of the **CAUTIONS** on page 89.

STANDARD SPECIFICATIONS: For valves on this page.
Ambient/Media Temperature: 40° to 175°F (4° to 80°C).
Flow Media: Filtered air. 5 micron recommended.
Pressure Range: 5 to 150 psig (0.3 to 10 bar).